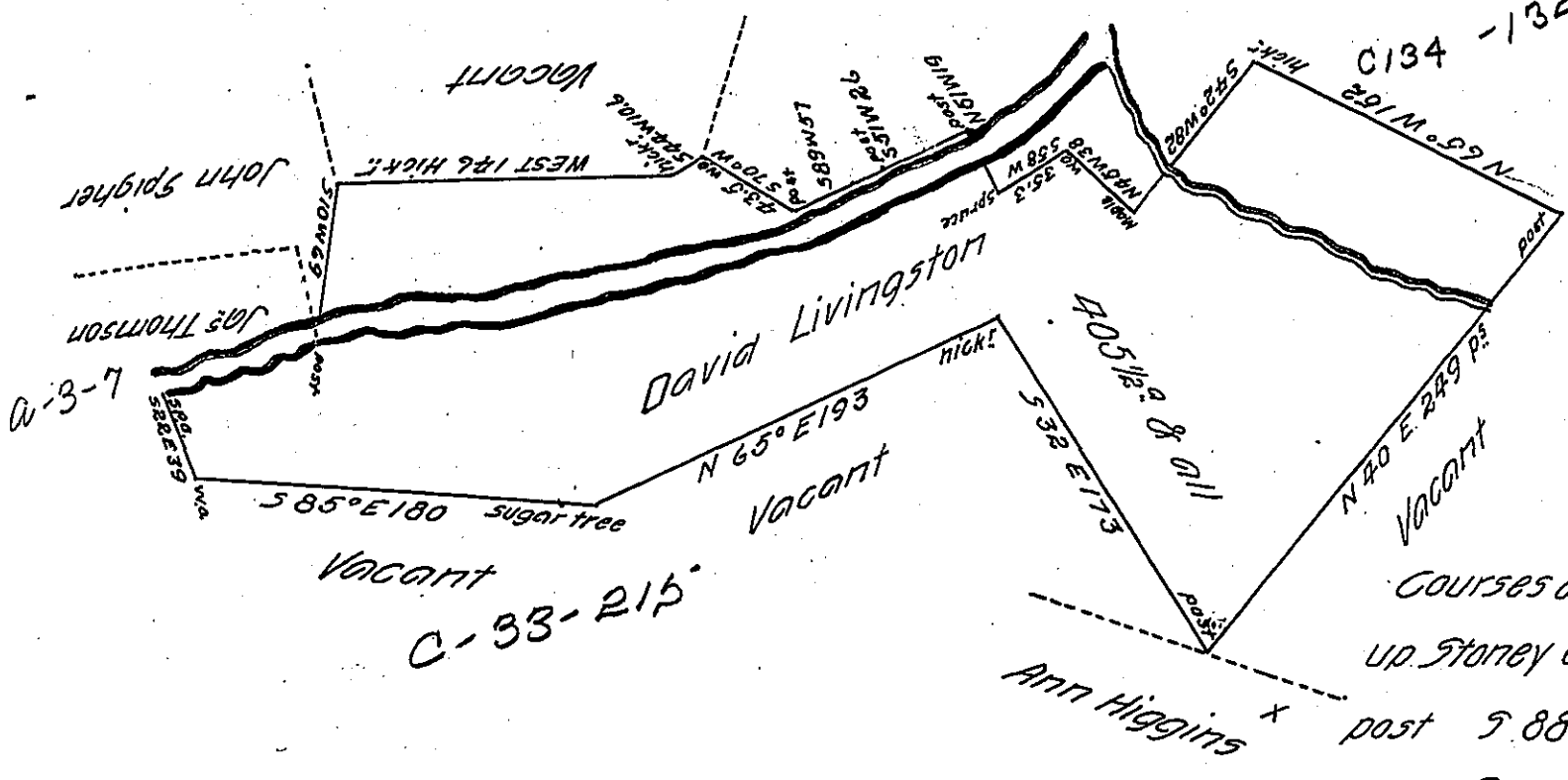


C131 147

David Livingstons Improvement



Note this survey is said to be returned by John - Esqr late D.S. Jno. Mc.

Courses & distances  
Up Stoney Creek from  
Ann Higgins x post  
S 88° W 16.9  
S 74° W 14 ps  
S 68 W 42 sps

Situate on both sides of Stoney Creek and Shade Creek in  
Quemahoning Township late Bedford now Somerset County and  
surveyed the 26<sup>th</sup> day of September 1796 by John Wells Esquire late  
Deputy Surveyor in pursuance of a warrant dated the 20<sup>th</sup> day of  
August 1794 And Certified the 8<sup>th</sup> day of March 1802

To Samuel Cochran Esquire } P: John McClean Deputy  
Surveyor General }

IN TESTIMONY that the above is a copy of the original remaining on file in  
the Department of Internal Affairs of Pennsylvania, made  
conformably to an Act of Assembly approved the 16th day of  
February, 1833, I have hereunto set my Hand and caused  
the Seal of said Department to be affixed at Harrisburg,  
this tenth day of October 1905

*Geo. N. Pearson*  
Secretary of Internal Affairs.